

NEW JERSEY DEPARTMENT OF CORRECTIONS

Gary M. Lanigan, Commissioner



OFFENDER CHARACTERISTICS REPORT

ON JANUARY 2, 2018

Office of Policy and Planning
January 2018

INTRODUCTION

This report has been developed to provide information regarding offender characteristics in each correctional complex, major institution, and satellite housing-unit under the jurisdiction of the New Jersey Department of Corrections on January 2, 2018. The selected characteristics compiled in this report are Base Offense at Admission, Total Term at Admission, Ethnicity, Age, County of Commitment, and Mandatory Minimum Term.

The Prison Complex includes: New Jersey State Prison, Central Reception and Assignment Facility, East Jersey State Prison, Bayside State Prison, Mid-State Correctional Facility, Southern State Correctional Facility, Northern State Prison, South Woods State Prison, Edna Mahan Correctional Facility for Women and the Adult Diagnostic and Treatment Center (ADTC), a facility for adult male sex offenders.

NOTE: In the data tables, separate subtotals are provided for ADTC and Edna Mahan Correctional Facility for Women due to the interest in these unique populations. The remainder of the Prison Complex is labeled “Male Offenders in Other Facilities”.

The Youth Correctional Complex consists of Garden State Youth Correctional Facility, Albert C. Wagner Youth Correctional Facility and Mountainview Youth Correctional Facility.

“Halfway Houses, County Jails, Reentry, St. Francis” include state-sentenced inmates housed in halfway houses, county jails, Reentry, and Central Medical Unit (St. Francis Hospital).

“Not Coded” are records for offenders in the correctional system for whom admission characteristics data had not been entered into the computerized information system as of January 2, 2018.

HIGHLIGHTS

- *Sixty-two percent (62%) of all New Jersey Department of Corrections inmates were committed for crimes against persons which include Homicide, Sexual Assault, Aggravated/Simple Assault, Robbery, Kidnapping, Other Sex Offenses and Other Person Offenses.*
- *Fourteen percent (14%) of all Department of Corrections inmates have been committed for narcotics law violations, including possession, sale and distribution. Eighty-five percent (85%) of all narcotics law violations are sale/distribution offenses.*
- *The median total term for Department of Corrections' inmates is 6 years.*
- *Thirty-nine percent (39%) of all New Jersey Department of Corrections inmates were committed with total terms of 10 years or more. Of the total, six percent (6%) are serving Life Sentences with parole eligibility, and 81 offenders are serving Life Sentences without parole.*
- *Seventy-five percent (75%) of New Jersey Department of Corrections inmates housed in the State System have sentences that include mandatory minimum terms.*
- *Thirty-six percent (36%) of all inmates in the New Jersey Department of Corrections are 30 years of age or younger. The median age for inmates in all facilities is 35.*
- *Sixty-two percent (62%) of New Jersey Department of Corrections' inmates are Black, 21% White, 16% Hispanic, and 1% Asian.*
- *Of the 21 New Jersey counties, ten (Atlantic, Bergen, Camden, Essex, Hudson, Mercer, Middlesex, Monmouth, Passaic and Union) account for 78% of Total Department of Corrections inmates. Essex County is the highest contributor with 15%.*

NOTES

DUE TO SOFTWARE AND ROUNDING:

- **WORKSHEET ROW AND COLUMN TOTALS DO NOT ALWAYS EQUAL 100 PERCENT.**
- **PIE CHART PERCENTAGES DO NOT ALWAYS EQUAL 100%.**
- **PIE CHART PERCENTAGES MAY DIFFER SLIGHTLY FROM WORKSHEET PERCENTAGES.**
- **ACCOMPANYING NARRATIVES REFLECT PIE CHART PERCENTAGES.**

TOTAL INMATES IN NEW JERSEY STATE CORRECTIONAL INSTITUTIONS AND SATELLITE UNITS

TOTAL INMATES		19,453
PRISON COMPLEX	14,018	YOUTH COMPLEX
ADTC	469	GARDEN STATE TOTAL
Bayside – Main	1,036	MOUNTAINVIEW TOTAL
Bayside – Farm	454	Wagner – Main
BAYSIDE TOTAL	1,490	Wagner – Ad Seg
CRAF – Jones Farm	146	Wagner – Minimum Units
CRAF – Reception	480	WAGNER TOTAL
CRAF TOTAL	626	HALFWAY HOUSES, COUNTY
East Jersey Main	1,174	JAILS, REENTRY, ST. FRANCIS
East Jersey Camp	45	Halfway Houses
EAST JERSEY TOTAL	1,219	County Jails
EDNA MAHAN TOTAL	599	Central Medical Unit (St. Francis)
MIDSTATE TOTAL	676	Reentry
NJ STATE PRISON TOTAL	1,494	
Northern State – Main	1,971	
Northern State – Ad Seg Male	443	
NORTHERN STATE TOTAL	2,414	
SOUTHERN STATE TOTAL	1,693	
SOUTH WOODS TOTAL	3,338	

TABLE OF CONTENTS

<u>REPORT NAME</u>	<u>PAGE</u>
<i>OFFENDERS IN NEW JERSEY CORRECTIONAL INSTITUTIONS BY BASE OFFENSE</i>	7
<i>Prison Complex Offenders</i>	8-11
<i>Youth Complex Offenders</i>	12
<i>Offenders in Halfway Houses, County Jails and St. Francis Hospital</i>	13
<i>OFFENDERS IN NEW JERSEY CORRECTIONAL INSTITUTIONS BY TOTAL TERM AT ADMISSION</i>	14
<i>Prison Complex Offenders</i>	15-18
<i>Youth Complex Offenders</i>	19
<i>Offenders in Halfway Houses, County Jails and St. Francis Hospital</i>	20
<i>OFFENDERS IN NEW JERSEY CORRECTIONAL INSTITUTIONS BY MANDATORY MINIMUM TERM</i>	21
<i>Prison Complex Offenders</i>	22-25
<i>Youth Complex Offenders</i>	26
<i>Offenders in Halfway Houses, County Jails and St. Francis Hospital</i>	27
<i>OFFENDERS IN NEW JERSEY CORRECTIONAL INSTITUTIONS BY AGE</i>	28
<i>Prison Complex Offenders</i>	29-32
<i>Youth Complex Offenders</i>	33
<i>Offenders in Halfway Houses, County Jails and St. Francis Hospital</i>	34
<i>OFFENDERS IN NEW JERSEY CORRECTIONAL INSTITUTIONS BY ETHNIC IDENTIFICATION</i>	35
<i>Prison Complex Offenders</i>	36-39
<i>Youth Complex Offenders</i>	40
<i>Offenders in Halfway Houses, County Jails and St. Francis Hospital</i>	41
<i>OFFENDERS IN NEW JERSEY CORRECTIONAL INSTITUTIONS BY COUNTY OF COMMITMENT</i>	42
<i>Prison Complex Offenders</i>	43-46
<i>Youth Complex Offenders</i>	47
<i>Offenders in Halfway Houses, County Jails and St. Francis Hospital</i>	48

BASE OFFENSE

**OFFENDERS IN NEW JERSEY CORRECTIONAL INSTITUTIONS
ON JANUARY 2, 2018, BY BASE OFFENSE**

In these tabulations, the base offense is the most serious offense at the time of admission. These figures reflect base or controlling offenses at admission only and do not include any offenses in addition to the base offense in the case of multiple sentences at admission. Additional sentences imposed following initial admission to the state correctional system are not included in these data.

- Violent offenses include homicide, sexual assault, aggravated and simple assault, robbery, kidnapping, other sex offenses and other person offenses (i.e. terroristic threats, coercion, larceny from a person, death by auto and negligent manslaughter).
- Property offenses include burglary, arson, theft, forgery, embezzlement, and receiving / possessing stolen property.
- Public policy offenses include racketeering, gambling, corruption, perjury, escape, bail jumping, juvenile and family related offenses, and conspiracy.
- Weapons offenses include weapon possession and operation.
- Drug violations include distribution, manufacture, possession, and use of drugs. Virtually all drug offenses are for sale and distribution rather than for mere possession.

OFFENDERS IN CORRECTIONAL INSTITUTIONS BY BASE OFFENSE

Base Offense	Total		Male Offenders in Other Facilities		Youth Complex		ADTC		Edna Mahan		*Halfway Houses, County Jails, Reentry, St. Francis	
	#	%	#	%	#	%	#	%	#	%	#	%
TOTAL OFFENDERS	19,453	100%	12,950	100%	2,558	100%	469	100%	599	100%	2,877	100%
Violent Offenses	11,983	62%	8,756	68%	1,569	61%	468	100%	381	64%	809	28%
Property Offenses	1,487	8%	981	8%	155	6%	0	0%	67	11%	284	10%
Public Policy	591	3%	390	3%	75	3%	0	0%	21	4%	105	4%
Weapons	2,570	13%	1,254	10%	562	22%	0	0%	27	5%	727	25%
Drugs	2,717	14%	1,558	12%	196	8%	0	0%	81	14%	882	31%
Not Coded	105	1%	11	0%	1	0%	1	0%	22	4%	70	2%

- Inmates with violent offenses comprise 68% of Male Offenders in Other Facilities, 61% of the Youth Complex, 100% of ADTC, 64% of Edna Mahan, and 28% of Halfway Houses, County Jails, Reentry, and St. Francis.
- * Halfway Houses, Reentry, County Jails, and Central Medical Unit (Saint Francis Hospital).

Prison Complex Offenders By Base Offense

Institution	Total	Violent Offenses	Homicide	Sexual Assault	Assault	Robbery	Kidnap	Other Sex	Other Person	Property	Public Policy	Weapons	Drugs	Not Coded
Bayside Main	1,036 100%	575 56%	163 16%	24 2%	116 11%	245 24%	10 1%	15 1%	2 0%	90 9%	33 3%	166 16%	172 17%	0 0%
Bayside Farm	454 100%	197 43%	48 11%	0 0%	46 10%	100 22%	2 0%	1 0%	0 0%	76 17%	19 4%	64 14%	98 22%	0 0%
Bayside Total	1,490 100%	772 52%	211 14%	24 2%	162 11%	345 23%	12 1%	16 1%	2 0%	166 11%	52 3%	230 15%	270 18%	0 0%
CRAF Jones Farm	146 100%	6 4%	0 0%	0 0%	3 2%	2 1%	0 0%	1 1%	0 0%	56 38%	12 8%	0 0%	72 49%	0 0%
CRAF Reception	480 100%	264 55%	23 5%	58 12%	38 8%	68 14%	2 0%	70 15%	5 1%	59 12%	31 6%	52 11%	71 15%	3 1%
CRAF Total	626 100%	270 43%	23 4%	58 9%	41 7%	70 11%	2 0%	71 11%	5 1%	115 18%	43 7%	52 8%	143 23%	3 0%
East Jersey Main	1,174 100%	1,100 94%	697 59%	91 8%	40 3%	218 19%	46 4%	6 1%	2 0%	12 1%	9 1%	17 1%	36 3%	0 0%
East Jersey Camp	45 100%	23 51%	1 2%	0 0%	4 9%	18 40%	0 0%	0 0%	0 0%	8 18%	4 9%	4 9%	6 13%	0 0%
East Jersey Total	1,219 100%	1,123 92%	698 57%	91 7%	44 4%	236 19%	46 4%	6 0%	2 0%	20 2%	13 1%	21 2%	42 3%	0 0%

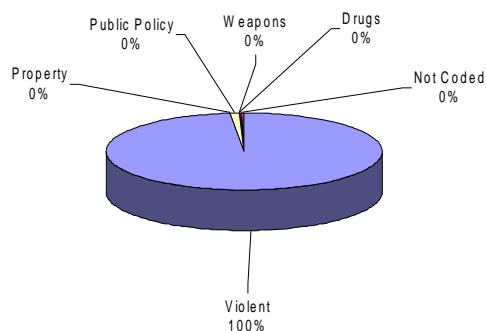
Prison Complex Offenders By Base Offense

Institution	Total	Violent Offenses	Homicide	Sexual Assault	Assault	Robbery	Kidnap	Other Sex	Other Person	Property	Public Policy	Weapons	Drugs	Not Coded
Midstate	676 100%	346 51%	66 10%	21 3%	76 11%	163 24%	4 1%	14 2%	2 0%	73 11%	20 3%	103 15%	134 20%	0 0%
NJ State Prison	1,494 100%	1,368 92%	966 65%	80 5%	49 3%	216 14%	43 3%	9 1%	5 0%	34 2%	18 1%	25 2%	45 3%	4 0%
Northern Main	1,971 100%	1,432 73%	531 27%	108 5%	178 9%	533 27%	37 2%	40 2%	5 0%	117 6%	42 2%	174 9%	206 10%	0 0%
Northern Ad. Seg. Male	443 100%	252 57%	62 14%	16 4%	43 10%	113 26%	4 1%	12 3%	2 0%	53 12%	23 5%	68 15%	47 11%	0 0%
Northern Total	2,414 100%	1,684 70%	593 25%	124 5%	221 9%	646 27%	41 2%	52 2%	7 0%	170 7%	65 3%	242 10%	253 10%	0 0%
Southern	1,693 100%	762 45%	87 5%	129 8%	159 9%	235 14%	8 0%	139 8%	5 0%	223 13%	69 4%	268 16%	371 22%	0 0%
South Woods	3,338 100%	2,431 73%	728 22%	399 12%	340 10%	724 22%	62 2%	165 5%	13 0%	180 5%	110 3%	313 9%	300 9%	4 0%
Subtotal Male Offenders in Other Facilities	12,950 100%	8,756 68%	3,372 26%	926 7%	1,092 8%	2,635 20%	218 2%	472 4%	41 0%	981 8%	390 3%	1,254 10%	1,558 12%	11 0%

Prison Complex Offenders By Base Offense

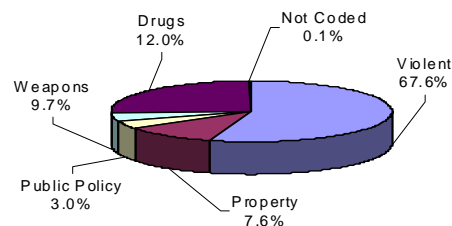
Institution	Total	Violent Offenses	Homicide	Sexual Assault	Assault	Robbery	Kidnap	Other Sex	Other Person	Property	Public Policy	Weapons	Drugs	Not Coded
ADTC	469	468	2	400	0	4	10	49	3	0	0	0	0	1
	100%	100%	0%	85%	0%	1%	2%	10%	1%	0%	0%	0%	0%	0%
Subtotal	13,419	9,224	3,374	1,326	1,092	2,639	228	521	44	981	390	1254	1,558	12
	100%	69%	25%	10%	8%	20%	2%	4%	0%	7%	3%	9%	12%	0%
Mahan - Female Prison	599	381	177	12	64	96	11	17	4	67	21	27	81	22
	100%	64%	30%	2%	11%	16%	2%	3%	1%	11%	4%	5%	14%	4%
Total Prison Complex	14,018	9,605	3,551	1,338	1,156	2,735	239	538	48	1,048	411	1281	1,639	34
	100%	69%	25%	10%	8%	20%	2%	4%	0%	7%	3%	9%	12%	0%

ADTC



Virtually all offenders at ADTC were committed for violent offenses.

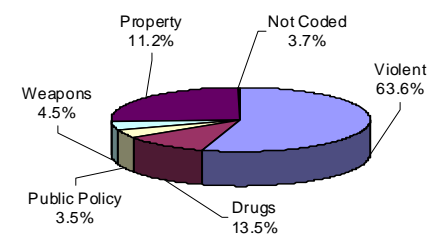
MALE OFFENDERS IN OTHER FACILITIES



Sixty-seven percent (67.6%) of Male Offenders in Other Facilities were convicted of a violent offense.

Twelve percent (12.0%) of all Male Offenders in Other Facilities were convicted of drug offenses.

FEMALE OFFENDERS



Violent offenses were the most frequent commitment-offenses at Edna Mahan (63.6%).

Thirteen percent (13.5%) of female inmates were committed for drug offenses.

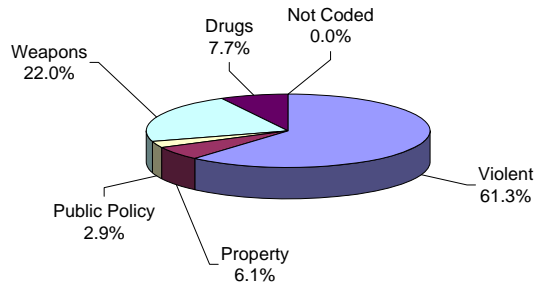
Youth Complex Offenders By Base Offense

Institution	Total	Violent Offenses	Homicide	Sexual Assault	Assault	Robbery	Kidnap	Other Sex	Other Person	Property	Public Policy	Weapons	Drugs	Not Coded
Garden State	1,254	823	139	53	181	421	3	22	4	54	30	268	79	0
	100%	66%	11%	4%	14%	34%	0%	2%	0%	4%	2%	21%	6%	0%
Mountainview	649	318	22	14	84	174	1	21	2	54	27	171	78	1
	100%	49%	3%	2%	13%	27%	0%	3%	0%	8%	4%	26%	12%	0%
Wagner Main	302	211	30	13	30	124	6	8	0	14	9	57	11	0
	100%	70%	10%	4%	10%	41%	2%	3%	0%	5%	3%	19%	4%	0%
Wagner Ad. Seg.	255	160	34	11	28	81	2	2	2	19	6	50	20	0
	100%	63%	13%	4%	11%	32%	1%	1%	1%	7%	2%	20%	8%	0%
Wagner Minimum Units	98	57	10	0	12	34	1	0	0	14	3	16	8	0
	100%	58%	10%	0%	12%	35%	1%	0%	0%	14%	3%	16%	8%	0%
Wagner Total	655	428	74	24	70	239	9	10	2	47	18	123	39	0
	100%	65%	11%	4%	11%	36%	1%	2%	0%	7%	3%	19%	6%	0%
Total Youth Complex	2,558	1,569	235	91	335	834	13	53	8	155	75	562	196	1
	100%	61%	9%	4%	13%	33%	1%	2%	0%	6%	3%	22%	8%	0%

Offenders In Halfway Houses, County Jails, Reentry, and St. Francis By Base Offense

Institution	Total	Violent Offenses	Homicide	Sexual Assault	Assault	Robbery	Kidnap	Other Sex	Other Person	Property	Public Policy	Weapons	Drugs	Not Coded
Central Medical Unit	6 100%	5 83%	2 33%	0 0%	0 0%	2 33%	0 0%	1 17%	0 0%	0 0%	0 0%	1 17%	0 0%	0 0%
County Jail	86 100%	13 15%	1 1%	0 0%	4 5%	4 5%	0 0%	4 5%	0 0%	2 2%	1 1%	1 1%	3 3%	66 77%
Reentry	126 100%	79 63%	13 10%	0 0%	23 18%	42 33%	1 1%	0 0%	0 0%	7 6%	1 1%	30 24%	9 7%	0 0%
Halfway House	2,659 100%	712 27%	105 4%	0 0%	183 7%	400 15%	2 0%	15 1%	7 0%	275 10%	103 4%	695 26%	870 33%	4 0%
Total Halfway Houses, County Jails, Reentry, St. Francis	2,877 100%	809 28%	121 4%	0 0%	210 7%	448 16%	3 0%	20 1%	7 0%	284 10%	105 4%	727 25%	882 31%	70 2%

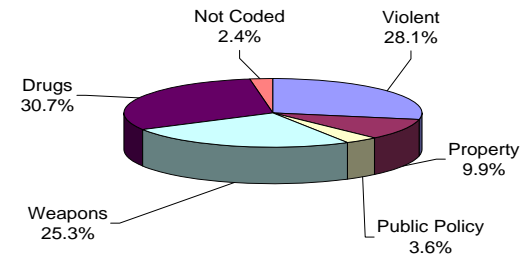
YOUTH COMPLEX



Sixty-one percent (61.3%) of offenders housed in the youth complex were incarcerated for violent offenses.

Seven percent (7.7%) of offenders housed in the youth complex were incarcerated for drug offenses and 6.9% for property offenses.

HALFWAY HOUSES, COUNTY JAILS, REENTRY, ST. FRANCIS



Offenders housed in county jails, halfway houses, Reentry, and St. Francis are less serious offenders than the Male Offenders in Other Facilities (i.e. 28.1% violent offenders vs. 67.6% Male Offenders in Other Facilities with violent offenses).

Thirty percent (30.7%) of offenders housed in Halfway Houses, County Jails, Reentry, and St. Francis were committed for drug offenses.

TOTAL MAXIMUM TERM AT ADMISSION

**OFFENDERS IN NEW JERSEY CORRECTIONAL INSTITUTIONS
ON JANUARY 2, 2018, BY TOTAL TERM AT ADMISSION**

Total term at admission is the total maximum term imposed for each offender at the time of commitment from the community or from parole. This includes the aggregate term for those admitted with multiple sentences. Additional sentences received following initial admission are not reflected or included in the data.

OFFENDERS IN NEW JERSEY CORRECTIONAL INSTITUTIONS BY TOTAL TERM AT ADMISSION

Total Term	Total		Male Offenders in Other Facilities		Youth Complex		ADTC		Edna Mahan		Halfway Houses, County Jails, Reentry, St. Francis	
	#	%	#	%	#	%	#	%	#	%	#	%
TOTAL OFFENDERS	19,453	100%	12,950	100%	2,558	100%	469	100%	599	100%	2,877	100%
1-2 Years	890	5%	676	5%	86	3%	0	0%	31	5%	97	3%
3 Years	2,124	11%	1,218	9%	377	15%	14	3%	107	18%	408	14%
4 Years	1,502	8%	848	7%	249	10%	17	4%	51	9%	337	12%
5 Years	3,709	19%	1,975	15%	746	29%	44	9%	98	16%	846	29%
6 Years	971	5%	527	4%	172	7%	29	6%	21	4%	222	8%
7 Years	1,222	6%	677	5%	243	9%	41	9%	30	5%	231	8%
8-9 Years	1,171	6%	696	5%	173	7%	61	13%	29	5%	212	7%
10 Years	1,194	6%	737	6%	187	7%	64	14%	27	5%	179	6%
11-14 Years	1,127	6%	798	6%	113	4%	59	13%	36	6%	121	4%
15 Years	581	3%	431	3%	56	2%	32	7%	15	3%	47	2%
16-20 Years	1,169	6%	951	7%	76	3%	51	11%	41	7%	50	2%
21+ Years	2,287	12%	2,060	16%	49	2%	54	12%	78	13%	46	2%
Life With Parole	1,099	6%	1,073	8%	0	0%	3	1%	23	4%	0	0%
Life Without Parole	81	0%	81	1%	0	0%	0	0%	0	0%	0	0%
Not Coded	326	2%	202	2%	31	1%	0	0%	12	2%	81	3%

Among New Jersey Adult Correctional Offenders:

- The median term for adult offenders is 6 years.
- Forty-three percent (43%) are serving terms of 1-5 years.
- Seventeen percent (17%) are serving terms of 6-9 years.
- Thirty-nine percent (39%) are serving terms of 10 years or more, which includes 1,099 offenders serving life and 81 serving life without parole sentences.
- Two percent (2%) were not coded.

Prison Complex Offenders By Total Term At Admission

Institution	Total	1-2 Years	3 Years	4 Years	5 Years	6 Years	7 Years	8-9 Years	10 Years	11-14 Years	15 Years	16-20 Years	20+ Years	Life With Parole	Life Without Parole	Not Coded
Bayside Main	1,036 100%	37 4%	115 11%	82 8%	224 22%	62 6%	61 6%	88 8%	85 8%	79 8%	42 4%	60 6%	59 6%	25 2%	0 0%	17 2%
Bayside Farm	454 100%	22 5%	65 14%	48 11%	101 22%	21 5%	29 6%	28 6%	30 7%	42 9%	17 4%	26 6%	14 3%	0 0%	0 0%	11 2%
Bayside Total	1,490 100%	59 4%	180 12%	130 9%	325 22%	83 6%	90 6%	116 8%	115 8%	121 8%	59 4%	86 6%	73 5%	25 2%	0 0%	28 2%
CRAF Jones Farm	146 100%	23 16%	48 33%	35 24%	17 12%	4 3%	3 2%	0 0%	1 1%	0 0%	0 0%	0 0%	0 0%	0 0%	0 0%	15 10%
CRAF Reception	480 100%	137 29%	78 16%	42 9%	88 18%	19 4%	22 5%	19 4%	12 3%	12 3%	3 1%	6 1%	3 1%	1 0%	0 0%	38 8%
CRAF Total	626 100%	160 26%	126 20%	77 12%	105 17%	23 4%	25 4%	19 3%	13 2%	12 2%	3 0%	6 1%	3 0%	1 0%	0 0%	53 8%
East Jersey Main	1,174 100%	0 0%	6 1%	7 1%	15 1%	6 1%	8 1%	10 1%	22 2%	73 6%	62 5%	169 14%	563 48%	229 20%	3 0%	1 0%
East Jersey Camp	45 100%	3 7%	7 16%	1 2%	5 11%	2 4%	0 0%	0 0%	6 13%	13 29%	2 4%	3 7%	2 4%	0 0%	0 0%	1 2%
East Jersey Total	1,219 100%	3 0%	13 1%	8 1%	20 2%	8 1%	8 1%	10 1%	28 2%	86 7%	64 5%	172 14%	565 46%	229 19%	3 0%	2 0%

Prison Complex Offenders By Total Term At Admission

Institution	Total	1-2 Years	3 Years	4 Years	5 Years	6 Years	7 Years	8-9 Years	10 Years	11-14 Years	15 Years	16-20 Years	20+ Years	Life With Parole	Life Without Parole	Not Coded
Midstate	676 100%	32 5%	76 11%	72 11%	167 25%	44 7%	50 7%	66 10%	45 7%	36 5%	17 3%	29 4%	25 4%	7 1%	0 0%	10 1%
NJ State Prison	1,494 100%	23 2%	43 3%	26 2%	44 3%	17 1%	19 1%	11 1%	22 1%	34 2%	10 1%	48 3%	625 42%	489 33%	76 5%	7 0%
Northern Main	1,971 100%	84 4%	177 9%	120 6%	258 13%	78 4%	88 4%	99 5%	148 8%	150 8%	81 4%	223 11%	293 15%	151 8%	0 0%	21 1%
Northern Ad Seg Male	443 100%	21 5%	48 11%	52 12%	102 23%	22 5%	29 7%	26 6%	23 5%	24 5%	19 4%	20 5%	39 9%	10 2%	0 0%	8 2%
Northern Total	2,414 100%	105 4%	225 9%	172 7%	360 15%	100 4%	117 5%	125 5%	171 7%	174 7%	100 4%	243 10%	332 14%	161 7%	0 0%	29 1%
Southern	1,693 100%	133 8%	310 18%	207 12%	466 28%	111 7%	129 8%	98 6%	77 5%	53 3%	17 1%	32 2%	18 1%	2 0%	0 0%	40 2%
South Woods	3,338 100%	161 5%	245 7%	156 5%	488 15%	141 4%	239 7%	251 8%	266 8%	282 8%	161 5%	335 10%	419 13%	159 5%	2 0%	33 1%
Subtotal Male Offenders in Other Facilities	12,950 100%	676 5%	1,218 9%	848 7%	1,975 15%	527 4%	677 5%	696 5%	737 6%	798 6%	431 3%	951 7%	2,060 16%	1,073 8%	81 1%	202 2%

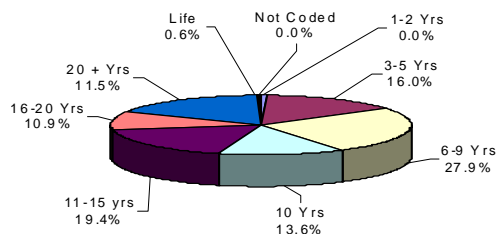
Prison Complex Offenders By Total Term At Admission

Institution	Total	1-2 Years	3 Years	4 Years	5 Years	6 Years	7 Years	8-9 Years	10 Years	11-14 Years	15 Years	16-20 Years	20+ Years	Life With Parole	Life Without Parole	Not Coded
ADTC	469 100%	0 0%	14 3%	17 4%	44 9%	29 6%	41 9%	61 13%	64 14%	59 13%	32 7%	51 11%	54 12%	3 1%	0 0%	0 0%
SUBTOTAL	13,419 100%	676 5%	1,232 9%	865 6%	2,019 15%	556 4%	718 5%	757 6%	801 6%	857 6%	463 3%	1,002 7%	2,114 16%	1,076 8%	81 1%	202 2%
Mahan - Female Prison	599 100%	31 5%	107 18%	51 9%	98 16%	21 4%	30 5%	29 5%	27 5%	36 6%	15 3%	41 7%	78 13%	23 4%	0 0%	12 2%
Total Prison Complex	14,018 100%	707 5%	1,339 10%	916 7%	2,117 15%	577 4%	748 5%	786 6%	828 6%	893 6%	478 3%	1,043 7%	2,192 16%	1,099 8%	81 1%	214 2%

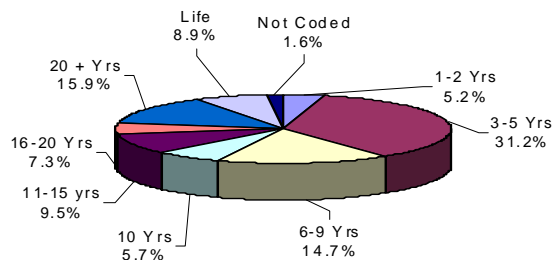
ADTC

MALE OFFENDERS IN OTHER FACILITIES

FEMALE OFFENDERS



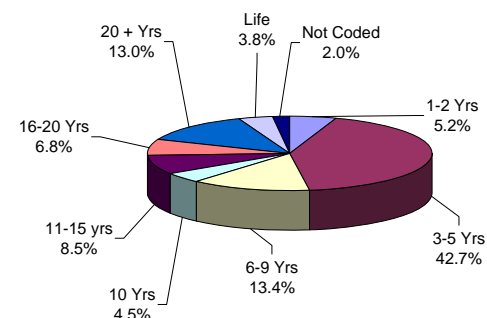
The median term at ADTC is 10 years.



The median term for Male Offenders in Other Facilities is 7 years.

Thirty-two percent (32.1%) of all Male Offenders in Other Facilities are serving sentences of 16 years or more.

Eighty-three percent (83%) of all offenders at New Jersey State Prison are serving sentences of 16 years or more, with 489 Life With Parole and 76 Life Without Parole.



The median term at Edna Mahan is 5 years.

Forty-seven percent (47.9%) of the female offenders at Edna Mahan Correctional Facility for Women are serving sentences of 5 years or less.

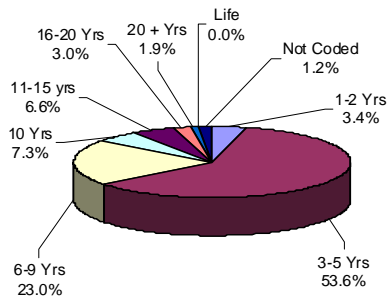
Youth Complex Offenders By Total Term At Admission

Institution	Total	1-2 Years	3 Years	4 Years	5 Years	6 Years	7 Years	8-9 Years	10 Years	11-14 Years	15 Years	16-20 Years	20+ Years	Life With Parole	Life Without Parole	Not Coded
Garden State	1,254	31	155	94	368	79	123	88	116	79	30	50	30	0	0	11
	100%	2%	12%	7%	29%	6%	10%	7%	9%	6%	2%	4%	2%	0%	0%	1%
Mountainview	649	37	138	96	208	47	50	29	24	7	0	0	0	0	0	13
	100%	6%	21%	15%	32%	7%	8%	4%	4%	1%	0%	0%	0%	0%	0%	2%
Wagner Main	302	8	32	28	79	19	36	23	27	14	12	13	9	0	0	2
	100%	3%	11%	9%	26%	6%	12%	8%	9%	5%	4%	4%	3%	0%	0%	1%
Wagner Ad Seg	255	8	41	24	67	17	24	19	12	10	10	11	10	0	0	2
	100%	3%	16%	9%	26%	7%	9%	7%	5%	4%	4%	4%	4%	0%	0%	1%
Wagner Minimum Units	98	2	11	7	24	10	10	14	8	3	4	2	0	0	0	3
	100%	2%	11%	7%	24%	10%	10%	14%	8%	3%	4%	2%	0%	0%	0%	3%
Wagner Total	655	18	84	59	170	46	70	56	47	27	26	26	19	0	0	7
	100%	3%	13%	9%	26%	7%	11%	9%	7%	4%	4%	4%	3%	0%	0%	1%
Total Youth Complex	2,558	86	377	249	746	172	243	173	187	113	56	76	49	0	0	31
	100%	3%	15%	10%	29%	7%	9%	7%	7%	4%	2%	3%	2%	0%	0%	1%

Offenders In Halfway Houses, County Jails, Reentry, and St. Francis By Total Term At Admission

Institution	Total	1-2 Years	3 Years	4 Years	5 Years	6 Years	7 Years	8-9 Years	10 Years	11-14 Years	15 Years	16-20 Years	20+ Years	Life	Capital	Not Coded
Central Medical Unit	6	2	2	0	0	0	0	0	0	0	0	0	2	0	0	0
	100%	33%	33%	0%	0%	0%	0%	0%	0%	0%	0%	0%	33%	0%	0%	0%
County Jail	86	6	2	4	1	1	1	0	2	0	0	0	1	0	0	68
	100%	7%	2%	5%	1%	1%	1%	0%	2%	0%	0%	0%	1%	0%	0%	79%
Reentry	126	3	21	17	33	9	9	12	8	6	2	4	2	0	0	0
	100%	2%	17%	13%	26%	7%	7%	10%	6%	5%	2%	3%	2%	0%	0%	0%
Halfway House	2,659	86	383	316	812	212	221	200	169	115	45	46	41	0	0	13
	100%	3%	14%	12%	31%	8%	8%	8%	6%	4%	2%	2%	2%	0%	0%	0%
Total Halfway Houses, County Jails, Reentry, St. Francis	2,877	97	408	337	846	222	231	212	179	121	47	50	46	0	0	81
	100%	3%	14%	12%	29%	8%	8%	7%	6%	4%	2%	2%	2%	0%	0%	3%

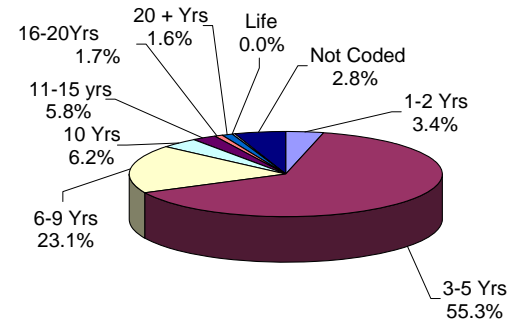
YOUTH COMPLEX



The median youth complex term is 5 years.

No youth complex offenders are currently serving life sentences.

HALFWAY HOUSES, COUNTY JAILS, REENTRY, ST. FRANCIS



The median term for offenders housed in Halfway Houses, County Jails, Reentry, and St. Francis is 5 years.

Fifty-eight percent (58.7%) of offenders housed in Halfway Houses, County Jails, Reentry, and St. Francis are serving terms of 5 years or less.

MANDATORY MINIMUM TERM

**OFFENDERS IN NEW JERSEY CORRECTIONAL INSTITUTIONS
ON JANUARY 2, 2018, BY MANDATORY MINIMUM TERM**

In New Jersey, since 1979, the courts have utilized mandatory minimum sentences. This means that an offender must serve the entire minimum sentence before being eligible for parole consideration. Mandatory minimum terms are not reduced by earned credits (commutation, minimum security, or work).

OFFENDERS IN CORRECTIONAL INSTITUTIONS BY MANDATORY MINIMUM TERM

Mandatory Minimum Term	Total		Male Offenders in Other Facilities		Youth Complex		ADTC		Edna Mahan		Halfway Houses, County Jails, Reentry, St. Francis	
	#	%	#	%	#	%	#	%	#	%	#	%
TOTAL OFFENDERS	14,762	100%	9,757	100%	2,012	100%	399	100%	390	100%	2,204	100%
<18 Months	705	5%	262	3%	163	8%	0	0%	12	3%	268	12%
18 Months	244	2%	123	1%	38	2%	0	0%	5	1%	78	4%
2 Years	509	3%	264	3%	48	2%	2	1%	11	3%	184	8%
3 Years	1,305	9%	683	7%	148	7%	6	2%	29	7%	439	20%
4 Years	1,989	13%	989	10%	443	22%	7	2%	27	7%	523	24%
5 Years	1,661	11%	985	10%	324	16%	32	8%	43	11%	277	13%
6-9 Years	2,831	19%	1,691	17%	600	30%	169	42%	80	21%	291	13%
10 Years	174	1%	125	1%	18	1%	12	3%	5	1%	14	1%
11-14 Years	1,337	9%	1021	10%	129	6%	74	19%	46	12%	67	3%
15 Years	216	1%	166	2%	14	1%	23	6%	7	2%	6	0%
16-19 Years	992	7%	828	8%	53	3%	38	10%	41	11%	32	1%
20-24 Years	549	4%	470	5%	31	2%	14	4%	21	5%	13	1%
25-29 Years	376	3%	353	4%	2	0%	14	4%	4	1%	3	0%
30 Years	771	5%	730	7%	0	0%	4	1%	29	7%	8	0%
30+ Years	1,103	7%	1067	11%	1	0%	4	1%	30	8%	1	0%

- Seventy-five percent (75.8%) of all adult offenders have mandatory minimum terms (14,762 out of 19,453).
- The median mandatory minimum term is 5.5 years.
- Twenty-seven percent (27%) of those with mandatory minimum terms have mandatory minimum terms of 15 years or more.

Prison Complex Offenders By Mandatory Minimum Term

Institution	Total	< 18 Months	18 Months	2 Years	3 Years	4 Years	5 Years	6-9 Years	10 Years	11-14 Years	15 Years	16-19 Years	20-24 Years	25-29 Years	30 Years	30+ Years
Bayside Main	755 100%	30 4%	16 2%	29 4%	58 8%	137 18%	100 13%	176 23%	13 2%	84 11%	11 1%	45 6%	20 3%	7 1%	22 3%	7 1%
Bayside Farm	305 100%	17 6%	7 2%	20 7%	38 12%	42 14%	42 14%	56 18%	3 1%	48 16%	6 2%	18 6%	2 1%	0 0%	6 2%	0 0%
Bayside Total	1,060 100%	47 4%	23 2%	49 5%	96 9%	179 17%	142 13%	232 22%	16 2%	132 12%	17 2%	63 6%	22 2%	7 1%	28 3%	7 1%
CRAF Jones Farm	39 100%	16 41%	1 3%	14 36%	6 15%	1 3%	1 3%	0 0%	0 0%	0 0%	0 0%	0 0%	0 0%	0 0%	0 0%	0 0%
CRAF Reception	187 100%	21 11%	7 4%	17 9%	31 17%	35 19%	28 15%	30 16%	3 2%	5 3%	2 1%	6 3%	2 1%	0 0%	0 0%	0 0%
CRAF Total	226 100%	37 16%	8 4%	31 14%	37 16%	36 16%	29 13%	30 13%	3 1%	5 2%	2 1%	6 3%	2 1%	0 0%	0 0%	0 0%
East Jersey Main	1,132 100%	2 0%	0 0%	4 0%	7 1%	8 1%	16 1%	53 5%	13 1%	133 12%	32 3%	196 17%	147 13%	121 11%	254 22%	146 13%
East Jersey Camp	33 100%	0 0%	1 3%	0 0%	0 0%	1 3%	5 15%	10 30%	3 9%	11 33%	0 0%	1 3%	0 0%	1 3%	0 0%	0 0%
East Jersey Total	1,165 100%	2 0%	1 0%	4 0%	7 1%	9 1%	21 2%	63 5%	16 1%	144 12%	32 3%	197 17%	147 13%	122 10%	254 22%	146 13%

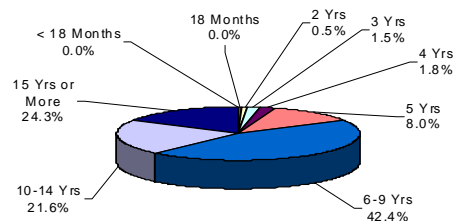
Prison Complex Offenders By Mandatory Minimum Term

Institution	Total	< 18 Months	18 Months	2 Years	3 Years	4 Years	5 Years	6-9 Years	10 Years	11-14 Years	15 Years	16-19 Years	20-24 Years	25-29 Years	30 Years	30+ Years
Midstate	486 100%	13 3%	12 2%	18 4%	54 11%	106 22%	80 16%	111 23%	5 1%	40 8%	4 1%	23 5%	9 2%	3 1%	5 1%	3 1%
NJ State Prison	1,318 100%	11 1%	2 0%	5 0%	14 1%	18 1%	23 2%	60 5%	6 0%	45 3%	16 1%	57 4%	33 3%	71 5%	166 13%	791 60%
Northern Main	1,533 100%	24 2%	17 1%	27 2%	94 6%	139 9%	142 9%	299 20%	27 2%	217 14%	26 2%	182 12%	86 6%	74 5%	131 9%	48 3%
Northern Ad Seg Male	310 100%	12 4%	6 2%	9 3%	31 10%	46 15%	53 17%	62 20%	3 1%	28 9%	5 2%	14 5%	21 7%	6 2%	11 4%	3 1%
Northern Total	1,843 100%	36 2%	23 1%	36 2%	125 7%	185 10%	195 11%	361 20%	30 2%	245 13%	31 2%	196 11%	107 6%	80 4%	142 8%	51 3%
Southern	1,002 100%	60 6%	24 2%	67 7%	201 20%	216 22%	170 17%	177 18%	4 0%	45 4%	6 1%	21 2%	4 0%	1 0%	6 1%	0 0%
South Woods	2,657 100%	56 2%	30 1%	54 2%	149 6%	240 9%	325 12%	657 25%	45 2%	365 14%	58 2%	265 10%	146 5%	69 3%	129 5%	69 3%
Subtotal Male Offenders in Other Facilities	9,757 100%	262 3%	123 1%	264 3%	683 7%	989 10%	985 10%	1,691 17%	125 1%	1,021 10%	166 2%	828 8%	470 5%	353 4%	730 7%	1,067 11%

Prison Complex Offenders By Mandatory Minimum Term

Institution	Total	< 18 Months	18 Months	2 Years	3 Years	4 Years	5 Years	6-9 Years	10 Years	11-14 Years	15 Years	16-19 Years	20-24 Years	25-29 Years	30 Years	30+ Years
ADTC	399 100%	0 0%	0 0%	2 1%	6 2%	7 2%	32 8%	169 42%	12 3%	74 19%	23 6%	38 10%	14 4%	14 4%	4 1%	4 1%
Subtotal	10,156 100%	262 3%	123 1%	266 3%	689 7%	996 10%	1,017 10%	1,860 18%	137 1%	1,095 11%	189 2%	866 9%	484 5%	367 4%	734 7%	1,071 11%
Mahan - Female Prison	390 100%	12 3%	5 1%	11 3%	29 7%	27 7%	43 11%	80 21%	5 1%	46 12%	7 2%	41 11%	21 5%	4 1%	29 7%	30 8%
Total Prison Complex	10,546 100%	274 3%	128 1%	277 3%	718 7%	1,023 10%	1,060 10%	1,940 18%	142 1%	1,141 11%	196 2%	907 9%	505 5%	371 4%	763 7%	1,101 10%

ADTC

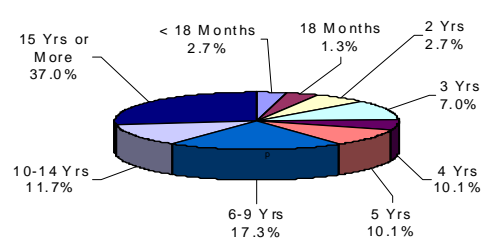


The median mandatory minimum term at ADTC is 8 years 5 months.

Eighty-five percent (85.0%) of the ADTC population have mandatory minimum sentences (399 of 469).

Forty-five percent (45.9%) have mandatory minimum terms of 10 years or longer.

MALE OFFENDERS IN OTHER FACILITIES

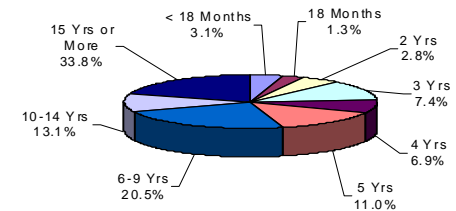


Of the 12,950 Male Offenders in Other Facilities, 75.3% (9,757) have mandatory minimum terms.

The median mandatory minimum term for Male Offenders in Other Facilities is 7.6 years (ADTC excluded).

Eighty-eight percent (88.2%) of New Jersey State Prison inmates have mandatory minimum terms and 86% percent of those have minimum terms of 15 years or more.

FEMALE OFFENDERS



The median mandatory minimum term at Edna Mahan is 7.6 years.

At Edna Mahan, 65.1% of the females housed have minimum terms (390 of 599).

Thirty-two percent (32.5%) of the females with mandatory minimum terms have terms of 5 years or less.

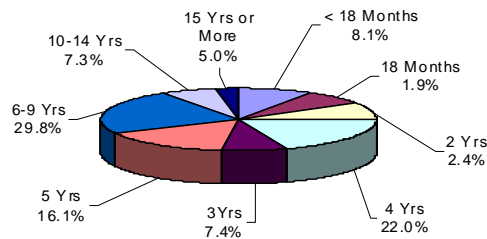
Youth Complex Offenders By Mandatory Minimum Term

Institution	Total	< 18 Months	18 Months	2 Years	3 Years	4 Years	5 Years	6-9 Years	10 Years	11-14 Years	15 Years	16-19 Years	20-24 Years	25-29 Years	30 Years	30+ Years
Garden State	1,026	76	16	15	64	210	163	325	14	79	11	29	22	1	0	1
	100%	7%	2%	1%	6%	20%	16%	32%	1%	8%	1%	3%	2%	0%	0%	0%
Mountainview	462	54	13	19	48	135	85	104	1	3	0	0	0	0	0	0
	100%	12%	3%	4%	10%	29%	18%	23%	0%	1%	0%	0%	0%	0%	0%	0%
Wagner Main	246	13	3	7	17	43	37	81	2	25	2	10	5	1	0	0
	100%	5%	1%	3%	7%	17%	15%	33%	1%	10%	1%	4%	2%	0%	0%	0%
Wagner Ad Seg	200	14	6	3	12	40	30	62	1	14	0	14	4	0	0	0
	100%	7%	3%	2%	6%	20%	15%	31%	1%	7%	0%	7%	2%	0%	0%	0%
Wagner Minimum Units	78	6	0	4	7	15	9	28	0	8	1	0	0	0	0	0
	100%	8%	0%	5%	9%	19%	12%	36%	0%	10%	1%	0%	0%	0%	0%	0%
Wagner Total	524	33	9	14	36	98	76	171	3	47	3	24	9	1	0	0
	100%	6%	2%	3%	7%	19%	15%	33%	1%	9%	1%	5%	2%	0%	0%	0%
Total Youth Complex	2,012	163	38	48	148	443	324	600	18	129	14	53	31	2	0	1
	100%	8%	2%	2%	7%	22%	16%	30%	1%	6%	1%	3%	2%	0%	0%	0%

Offenders In Halfway Houses, County Jails, Reentry, and St. Francis By Mandatory Minimum Term

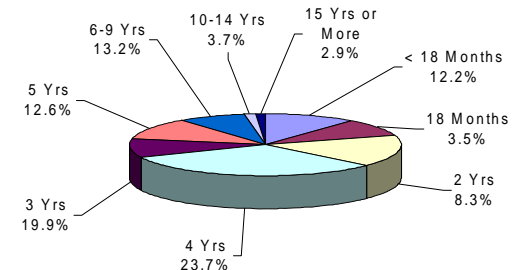
Institution	Total	< 18 Months	18 Months	2 Years	3 Years	4 Years	5 Years	6-9 Years	10 Years	11-14 Years	15 Years	16-19 Years	20-24 Years	25-29 Years	30 Years	30+ Years
Central Medical Unit	3 100%	1 33%	0 0%	0 0%	0 0%	0 0%	0 0%	0 0%	0 0%	0 0%	0 0%	0 0%	0 0%	1 33%	0 0%	1 33%
County Jail	6 100%	1 17%	0 0%	1 17%	0 0%	0 0%	1 17%	2 33%	0 0%	0 0%	0 0%	0 0%	0 0%	1 17%	0 0%	0 0%
Reentry	105 100%	4 4%	4 4%	0 0%	11 10%	26 25%	19 18%	31 30%	1 1%	3 3%	0 0%	5 5%	0 0%	1 1%	0 0%	0 0%
Halfway House	2,090 100%	262 13%	74 4%	183 9%	428 20%	497 24%	257 12%	258 12%	13 1%	64 3%	6 0%	27 1%	13 1%	0 0%	8 0%	0 0%
Total Halfway Houses, County Jails, Reentry, St. Francis	2,204 100%	268 12%	78 4%	184 8%	439 20%	523 24%	277 13%	291 13%	14 1%	67 3%	6 0%	32 1%	13 1%	3 0%	8 0%	1 0%

YOUTH COMPLEX



The median mandatory minimum term for youth complex offenders is 4.2 years. Among youth complex offenders, 78.6% have mandatory minimum terms (2,012 of 2,558). Of these, 57.9% have mandatory minimum terms of 5 years or less.

HALFWAY HOUSES COUNTY JAILS, REENTRY, ST. FRANCIS



The median mandatory minimum term for inmates in Halfway Houses, County Jails, Reentry, and St. Francis is 3.5 years. Seventy-six percent (76.6%) of the offenders in Halfway Houses, County Jails, Reentry, and St. Francis have mandatory minimum terms (2,204 of 2,877). Of these, 81% have mandatory minimum terms of 5 years or less.

AGE GROUP

**OFFENDERS IN NEW JERSEY CORRECTIONAL INSTITUTIONS
ON JANUARY 2, 2018, BY AGE**

The age of the offender is the chronological age as of January 2, 2018.

OFFENDERS IN CORRECTIONAL INSTITUTIONS BY AGE

Age	Total		Male Offenders in Other Facilities		Youth Complex		ADTC		Edna Mahan		Halfway Houses, County Jails, Reentry, St. Francis	
	#	%	#	%	#	%	#	%	#	%	#	%
TOTAL OFFENDERS	19,453	100%	12,950	100%	2,558	100%	469	100%	599	100%	2,877	100%
< 17 Years	0	0%	0	0%	0	0%	0	0%	0	0%	0	0%
17 Years	0	0%	0	0%	0	0%	0	0%	0	0%	0	0%
18-20 Years	319	2%	18	0%	253	10%	3	1%	7	1%	38	1%
21-22 Years	899	5%	123	1%	616	24%	13	3%	13	2%	134	5%
23-24 Years	1,290	7%	289	2%	730	29%	14	3%	41	7%	216	8%
25-27 Years	2,227	11%	999	8%	781	31%	23	5%	73	12%	351	12%
28-30 Years	2,167	11%	1,605	12%	158	6%	28	6%	56	9%	320	11%
31-33 Years	1,863	10%	1,466	11%	10	0%	33	7%	65	11%	289	10%
34-36 Years	1,815	9%	1,455	11%	3	0%	30	6%	57	10%	270	9%
37-39 Years	1,644	8%	1,323	10%	1	0%	27	6%	41	7%	252	9%
40-44 Years	2,102	11%	1,602	12%	2	0%	69	15%	70	12%	359	12%
45-49 Years	1,846	9%	1,453	11%	1	0%	60	13%	63	11%	269	9%
50-54 Years	1,359	7%	1,093	8%	0	0%	55	12%	48	8%	163	6%
55-59 Years	936	5%	748	6%	1	0%	49	10%	41	7%	97	3%
60-64 Years	499	3%	418	3%	2	0%	23	5%	16	3%	40	1%
65+ Years	422	2%	358	3%	0	0%	42	9%	8	1%	14	0%
Not Coded	65	0%	0	0%	0	0%	0	0%	0	0%	65	2%

- The median age for all inmates is 35 years.
- Two percent (2%) of all offenders are 20 years of age or younger.
- Thirty-four percent (34%) of all offenders are between the ages of 21-30.
- Twenty-seven percent (27%) of all offenders are 31 to 39 years of age.
- Thirty-seven percent (37%) of all offenders are 40 years of age and older.

Prison Complex Offenders By Age

Institution	Total	< 17 Years	17 Years	18-20 Years	21-22 Years	23-24 Years	25-27 Years	28-30 Years	31-33 Years	34-36 Years	37-39 Years	40-44 Years	45-49 Years	50-54 Years	55-59 Years	60-64 Years	65+ Years	Not Coded
Bayside Main	1,036 100%	0 0%	0 0%	0 0%	2 0%	18 2%	107 10%	201 19%	151 15%	128 12%	100 10%	116 11%	99 10%	56 5%	32 3%	19 2%	7 1%	0 0%
Bayside Farm	454 100%	0 0%	0 0%	0 0%	0 0%	3 1%	21 5%	59 13%	54 12%	56 12%	53 12%	62 14%	59 13%	53 12%	24 5%	7 2%	3 1%	0 0%
Bayside Total	1,490 100%	0 0%	0 0%	0 0%	2 0%	21 1%	128 9%	260 17%	205 14%	184 12%	153 10%	178 12%	158 11%	109 7%	56 4%	26 2%	10 1%	0 0%
CRAF Jones Farm	146 100%	0 0%	0 0%	0 0%	0 0%	0 0%	4 3%	24 16%	25 17%	15 10%	19 13%	11 8%	23 16%	15 10%	4 3%	5 3%	1 1%	0 0%
CRAF Reception	480 100%	0 0%	0 0%	7 1%	25 5%	43 9%	58 12%	60 13%	58 12%	51 11%	38 8%	48 10%	38 8%	29 6%	13 3%	6 1%	6 1%	0 0%
CRAF Total	626 100%	0 0%	0 0%	7 1%	25 4%	43 7%	62 10%	84 13%	83 13%	66 11%	57 9%	59 9%	61 10%	44 7%	17 3%	11 2%	7 1%	0 0%
East Jersey Main	1,174 100%	0 0%	0 0%	0 0%	0 0%	5 0%	38 3%	58 5%	101 9%	119 10%	118 10%	185 16%	191 16%	131 11%	117 10%	67 6%	44 4%	0 0%
East Jersey Camp	45 100%	0 0%	0 0%	0 0%	0 0%	1 2%	1 2%	3 7%	6 13%	2 4%	6 13%	7 16%	6 13%	4 9%	7 16%	2 4%	0 0%	0 0%
East Jersey Total	1,219 100%	0 0%	0 0%	0 0%	0 0%	6 0%	39 3%	61 5%	107 9%	121 10%	124 10%	192 16%	197 16%	135 11%	124 10%	69 6%	44 4%	0 0%

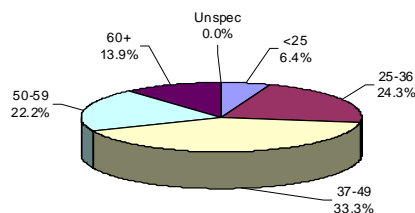
Prison Complex Offenders By Age

Institution	Total	< 17 Years	17 Years	18-20 Years	21-22 Years	23-24 Years	25-27 Years	28-30 Years	31-33 Years	34-36 Years	37-39 Years	40-44 Years	45-49 Years	50-54 Years	55-59 Years	60-64 Years	65+ Years	Not Coded
Midstate	676 100%	0 0%	0 0%	0 0%	36 5%	61 9%	101 15%	87 13%	58 9%	52 8%	68 10%	75 11%	56 8%	39 6%	33 5%	9 1%	1 0%	0 0%
NJ State Prison	1,494 100%	0 0%	0 0%	2 0%	12 1%	43 3%	71 5%	118 8%	150 10%	141 9%	141 9%	193 13%	195 13%	168 11%	115 8%	61 4%	84 6%	0 0%
Northern Main	1,971 100%	0 0%	0 0%	4 0%	8 0%	20 1%	146 7%	266 13%	196 10%	216 11%	208 11%	246 12%	239 12%	182 9%	99 5%	80 4%	61 3%	0 0%
Northern Ad Seg Male	443 100%	0 0%	0 0%	4 1%	14 3%	19 4%	43 10%	63 14%	69 16%	68 15%	45 10%	49 11%	31 7%	18 4%	14 3%	5 1%	1 0%	0 0%
Northern Total	2,414 100%	0 0%	0 0%	8 0%	22 1%	39 2%	189 8%	329 14%	265 11%	284 12%	253 10%	295 12%	270 11%	200 8%	113 5%	85 4%	62 3%	0 0%
Southern	1,693 100%	0 0%	0 0%	0 0%	2 0%	9 1%	122 7%	259 15%	244 14%	239 14%	183 11%	220 13%	183 11%	109 6%	76 4%	34 2%	13 1%	0 0%
South Woods	3,338 100%	0 0%	0 0%	1 0%	24 1%	67 2%	287 9%	407 12%	354 11%	368 11%	344 10%	390 12%	333 10%	289 9%	214 6%	123 4%	137 4%	0 0%
Subtotal Male Offenders in Other Facilities	12,950 100%	0 0%	0 0%	18 0%	123 1%	289 2%	999 8%	1,605 12%	1,466 11%	1,455 11%	1,323 10%	1,602 12%	1,453 11%	1,093 8%	748 6%	418 3%	358 3%	0 0%

Prison Complex Offenders By Age

Institution	Total	< 17 Years	17 Years	18-20 Years	21-22 Years	23-24 Years	25-27 Years	28-30 Years	31-33 Years	34-36 Years	37-39 Years	40-44 Years	45-49 Years	50-54 Years	55-59 Years	60-64 Years	65+ Years	Not Coded
ADTC	469	0	0	3	13	14	23	28	33	30	27	69	60	55	49	23	42	0
	100%	0%	0%	1%	3%	3%	5%	6%	7%	6%	6%	15%	13%	12%	10%	5%	9%	0%
Subtotal	13,419	0	0	21	136	303	1,022	1,633	1,499	1,485	1,350	1,671	1,513	1,148	797	441	400	0
	100%	0%	0%	0%	1%	2%	8%	12%	11%	11%	10%	12%	11%	9%	6%	3%	3%	0%
Mahan - Female Prison	599	0	0	7	13	41	73	56	65	57	41	70	63	48	41	16	8	0
	100%	0%	0%	1%	2%	7%	12%	9%	11%	10%	7%	12%	11%	8%	7%	3%	1%	0%
Total Prison Complex	14,018	0	0	28	149	344	1,095	1,689	1,564	1,542	1,391	1,741	1,576	1,196	838	457	408	0
	100%	0%	0%	0%	1%	2%	8%	12%	11%	11%	10%	12%	11%	9%	6%	3%	3%	0%

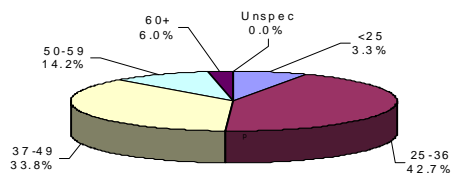
ADTC



The median age at ADTC is 44 years.

Thirty-six percent (36.1%) of the ADTC offenders are 50 years of age or older. This may be compared with 20.2% of Male Offenders in Other Facilities and 18.9% of female (Edna Mahan) offenders.

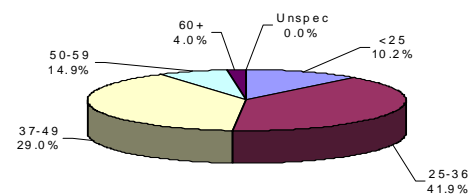
MALE OFFENDERS IN OTHER FACILITIES



The median age for Male Offenders in Other Facilities is 38 years.

Forty-two percent (42.7%) of Male Offenders in Other Facilities are age 25 to 36 (ADTC excluded).

FEMALE OFFENDERS



The median age for female inmates (Edna Mahan) is 36 years.

Forty-one percent (41.9%) of the women at Edna Mahan are age 25 to 36.

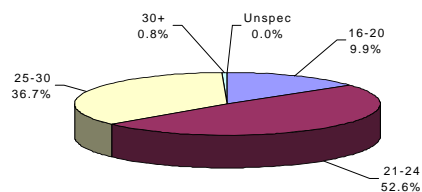
Youth Complex Offenders By Age

Institution	Total	< 17 Years	17 Years	18-20 Years	21-22 Years	23-24 Years	25-27 Years	28-30 Years	31-33 Years	34-36 Years	37-39 Years	40-44 Years	45-49 Years	50-54 Years	55-59 Years	60-64 Years	65+ Years	Not Coded
Garden State	1,254 100%	0 0%	0 0%	134 11%	304 24%	367 29%	381 30%	57 5%	2 0%	2 0%	1 0%	2 0%	1 0%	0 0%	1 0%	2 0%	0 0%	0 0%
Mountainview	649 100%	0 0%	0 0%	83 13%	165 25%	161 25%	210 32%	27 4%	3 0%	0 0%	0 0%	0 0%	0 0%	0 0%	0 0%	0 0%	0 0%	0 0%
Wagner Main	302 100%	0 0%	0 0%	5 2%	67 22%	114 38%	90 30%	24 8%	2 1%	0 0%	0 0%	0 0%	0 0%	0 0%	0 0%	0 0%	0 0%	0 0%
Wagner Ad Seg	255 100%	0 0%	0 0%	29 11%	66 26%	62 24%	67 26%	31 12%	0 0%	0 0%	0 0%	0 0%	0 0%	0 0%	0 0%	0 0%	0 0%	0 0%
Wagner Minimum Units	98 100%	0 0%	0 0%	2 2%	14 14%	26 27%	33 34%	19 19%	3 3%	1 1%	0 0%	0 0%	0 0%	0 0%	0 0%	0 0%	0 0%	0 0%
Wagner Total	655 100%	0 0%	0 0%	36 5%	147 22%	202 31%	190 29%	74 11%	5 1%	1 0%	0 0%	0 0%	0 0%	0 0%	0 0%	0 0%	0 0%	0 0%
Total Youth Complex	2,558 100%	0 0%	0 0%	253 10%	616 24%	730 29%	781 31%	158 6%	10 0%	3 0%	1 0%	2 0%	1 0%	0 0%	1 0%	2 0%	0 0%	0 0%

Offenders In Halfway Houses, County Jails, Reentry, and St. Francis By Age

Institution	Total	< 17 Years	17 Years	18-20 Years	21-22 Years	23-24 Years	25-27 Years	28-30 Years	31-33 Years	34-36 Years	37-39 Years	40-44 Years	45-49 Years	50-54 Years	55-59 Years	60-64 Years	65+ Years	Not Coded
Central Medical Unit	6	0	0	0	0	0	0	0	1	0	0	0	0	1	1	1	2	0
	100%	0%	0%	0%	0%	0%	0%	0%	17%	0%	0%	0%	0%	17%	17%	17%	33%	0%
County Jail	86	0	0	2	0	3	3	4	0	2	2	2	2	0	0	0	1	65
	100%	0%	0%	2%	0%	3%	3%	5%	0%	2%	2%	2%	2%	0%	0%	0%	1%	76%
Reentry	126	0	0	0	9	22	32	20	12	11	7	6	3	4	0	0	0	0
	100%	0%	0%	0%	7%	17%	25%	16%	10%	9%	6%	5%	2%	3%	0%	0%	0%	0%
Halfway House	2,659	0	0	36	125	191	316	296	276	257	243	351	264	158	96	39	11	0
	100%	0%	0%	1%	5%	7%	12%	11%	10%	10%	9%	13%	10%	6%	4%	1%	0%	0%
Total Halfway Houses, County Jails, Reentry, St. Francis	2,877	0	0	38	134	216	351	320	289	270	252	359	269	163	97	40	14	65
	100%	0%	0%	1%	5%	8%	12%	11%	10%	9%	9%	12%	9%	6%	3%	1%	0%	2%

YOUTH COMPLEX

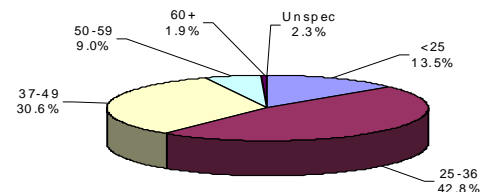


The median age for the youth complex is 24 years.

Eighty-nine percent (89.3%) of all youth complex inmates are between the ages of 21 and 30.

Sixty-two percent (62.5%) are less than 25 years of age.

HALFWAY HOUSES, COUNTY JAILS, REENTRY, ST. FRANCIS



The median age for offenders in Halfway Houses, County Jails, Reentry, and St. Francis is 34 years.

The median age for offenders housed in county jails is 29 years; while offenders in halfway houses have a median age of 35 years.

RACE/ETHNIC IDENTIFICATION

**OFFENDERS IN NEW JERSEY CORRECTIONAL INSTITUTIONS
ON JANUARY 2, 2018, BY RACE/ETHNIC IDENTIFICATION**

In these tabulations, a Hispanic is a person of Mexican, Puerto Rican, Cuban, South American or other Spanish culture or origin (Spain or Portugal) regardless of complexion.

OFFENDERS IN CORRECTIONAL INSTITUTIONS BY RACE/ETHNIC IDENTIFICATION

Ethnic Identification	Total		Male Offenders in Other Facilities		Youth Complex		ADTC		Edna Mahan		Halfway Houses, County Jails, Reentry, St. Francis	
	#	%	#	%	#	%	#	%	#	%	#	%
TOTAL OFFENDERS	19,453	100%	12,950	100%	2,558	100%	469	100%	599	100%	2,877	100%
Black	11,965	62%	7,829	60%	1,744	68%	109	23%	291	49%	1,992	69%
White	4,172	21%	2,811	22%	413	16%	238	51%	241	40%	469	16%
Hispanic	3,118	16%	2,226	17%	383	15%	113	24%	55	9%	341	12%
Asian	122	1%	76	1%	18	1%	9	2%	11	2%	8	0%
American Indian	11	0%	8	0%	0	0%	0	0%	1	0%	2	0%
Other or Not Coded	65	0%	0	0%	0	0%	0	0%	0	0%	65	2%

- Sixty-two (62%) percent of all state correctional institution offenders were Black, 21% were White, 16% were Hispanic, and 1% were Asian.

Prison Complex Offenders By Race/Ethnic Identification

Institution	Total	Black	White	Hispanic	Asian	American Indian	Other or Not Coded
Bayside Main	1,036 100%	684 66%	199 19%	151 15%	2 0%	0 0%	0 0%
Bayside Farm	454 100%	296 65%	95 21%	60 13%	3 1%	0 0%	0 0%
Bayside Total	1,490 100%	980 66%	294 20%	211 14%	5 0%	0 0%	0 0%
CRAF Jones Farm	146 100%	42 29%	84 58%	19 13%	1 1%	0 0%	0 0%
CRAF Reception	480 100%	284 59%	128 27%	65 14%	3 1%	0 0%	0 0%
CRAF Total	626 100%	326 52%	212 34%	84 13%	4 1%	0 0%	0 0%
East Jersey Main	1,174 100%	738 63%	194 17%	234 20%	8 1%	0 0%	0 0%
East Jersey Camp	45 100%	27 60%	12 27%	6 13%	0 0%	0 0%	0 0%
East Jersey Total	1,219 100%	765 63%	206 17%	240 20%	8 1%	0 0%	0 0%

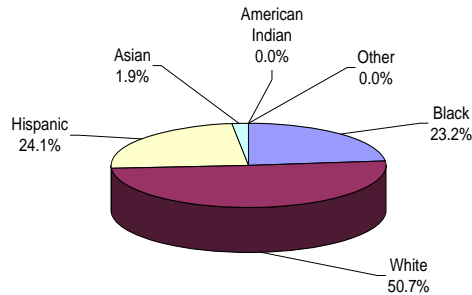
Prison Complex Offenders By Race/Ethnic Identification

Institution	Total	Black	White	Hispanic	Asian	American Indian	Other or Not Coded
Midstate	676	441	141	88	5	1	0
	100%	65%	21%	13%	1%	0%	0%
NJ State Prison	1,494	933	306	231	23	1	0
	100%	62%	20%	15%	2%	0%	0%
Northern Main	1,971	1,295	309	360	5	2	0
	100%	66%	16%	18%	0%	0%	0%
Northern Ad Seg Male	443	254	127	61	1	0	0
	100%	57%	29%	14%	0%	0%	0%
Northern Total	2,414	1,549	436	421	6	2	0
	100%	64%	18%	17%	0%	0%	0%
Southern	1,693	928	418	335	11	1	0
	100%	55%	25%	20%	1%	0%	0%
South Woods	3,338	1,907	798	616	14	3	0
	100%	57%	24%	18%	0%	0%	0%
Subtotal Male Offenders in Other Facilities	12,950	7,829	2,811	2,226	76	8	0
	100%	60%	22%	17%	1%	0%	0%

Prison Complex Offenders By Race/Ethnic Identification

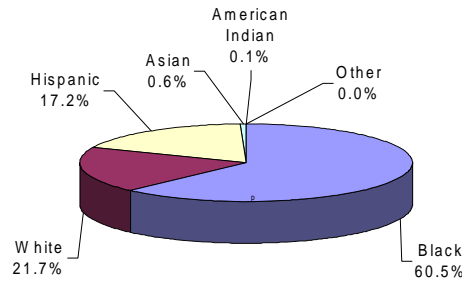
Institution	Total	Black	White	Hispanic	Asian	American Indian	Other or Not Coded
ADTC	469 100%	109 23%	238 51%	113 24%	9 2%	0 0%	0 0%
Subtotal	13,419 100%	7,938 59%	3,049 23%	2,339 17%	85 1%	8 0%	0 0%
Mahan - Female Prison	599 100%	291 49%	241 40%	55 9%	11 2%	1 0%	0 0%
Total Prison Complex	14,018 100%	8,229 59%	3,290 23%	2,394 17%	96 1%	9 0%	0 0%

ADTC



White offenders comprised 50.7% of the offenders at ADTC.

MALE OFFENDERS IN OTHER FACILITIES

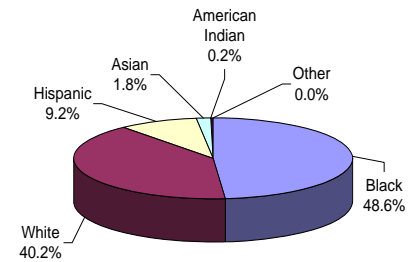


The largest proportion of Black male offenders in a major facility was at Bayside (66%).

The largest proportion of White male offenders at a major facility was at CRAF (34%), ADTC excluded.

The largest proportion of Hispanic male offenders at a major facility was at East Jersey and Southern (20%), (ADTC excluded).

FEMALE OFFENDERS



Black offenders comprised 48.6% of the population at Edna Mahan. This may be compared with Black offenders comprising 60.5% of the Male Offenders in Other Facilities.

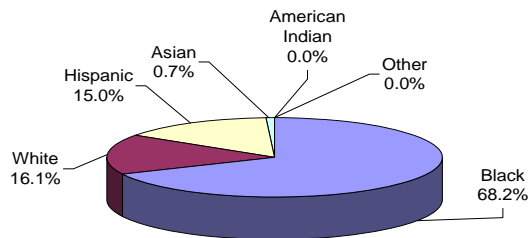
Youth Complex Offenders By Race/Ethnic Identification

Institution	Total	Black	White	Hispanic	Asian	American Indian	Other or Not Coded
Garden State	1,254 100%	884 70%	171 14%	191 15%	8 1%	0 0%	0 0%
Mountainview	649 100%	402 62%	147 23%	92 14%	8 1%	0 0%	0 0%
Wagner Main	302 100%	206 68%	40 13%	56 19%	0 0%	0 0%	0 0%
Wagner Ad Seg	255 100%	189 74%	31 12%	33 13%	2 1%	0 0%	0 0%
Wagner Minimum Units	98 100%	63 64%	24 24%	11 11%	0 0%	0 0%	0 0%
Wagner Total	655 100%	458 70%	95 15%	100 15%	2 0%	0 0%	0 0%
Total Youth Complex	2,558 100%	1,744 68%	413 16%	383 15%	18 1%	0 0%	0 0%

Offenders In Halfway Houses, County Jails, Reentry, and St. Francis By Race/Ethnic Identification

Institution	Total	Black	White	Hispanic	Asian	American Indian	Other or Not Coded
Central Medical Unit	6 100%	3 50%	2 33%	1 17%	0 0%	0 0%	0 0%
County Jail	86 100%	13 15%	5 6%	3 3%	0 0%	0 0%	65 76%
Reentry	126 100%	106 84%	4 3%	15 12%	1 1%	0 0%	0 0%
Halfway House	2,659 100%	1,870 70%	458 17%	322 12%	7 0%	2 0%	0 0%
Total Halfway Houses, County Jails, Reentry, St. Francis	2,877 100%	1,992 69%	469 16%	341 12%	8 0%	2 0%	65 2%

YOUTH COMPLEX

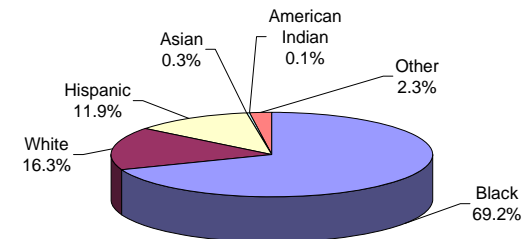


The largest proportion of Black offenders in the youth complex facilities was housed at Garden State and Wagner (70%).

The largest proportion of White offenders in the youth complex facilities was housed at Mountainview (23%).

The largest proportion of Hispanic offenders in the youth complex facilities was housed at Garden State and Wagner (15%).

HALFWAY HOUSES, COUNTY JAILS, REENTRY, ST. FRANCIS



Race and ethnicity for inmates assigned to Halfway Houses, County Jails, Reentry, and St. Francis was roughly equivalent to that for the total adult inmate population.

COUNTY OF COMMITMENT

**OFFENDERS IN NEW JERSEY CORRECTIONAL INSTITUTIONS
ON JANUARY 2, 2018, BY COUNTY OF COMMITMENT**

OFFENDERS IN NEW JERSEY CORRECTIONAL INSTITUTIONS BY COUNTY OF COMMITMENT

County of Commitment	Total		Male Offenders in Other Facilities		Youth Complex		ADTC		Edna Mahan		Halfway Houses, County Jails, Reentry, St. Francis	
	#	%	#	%	#	%	#	%	#	%	#	%
TOTAL OFFENDERS	19,453	100%	12,950	100%	2,558	100%	469	100%	599	100%	2,877	100%
Atlantic	1,139	6%	777	6%	119	5%	16	3%	47	8%	180	6%
Bergen	786	4%	560	4%	73	3%	49	10%	19	3%	85	3%
Burlington	682	4%	493	4%	70	3%	20	4%	26	4%	73	3%
Camden	2,355	12%	1,575	12%	292	11%	47	10%	77	13%	364	13%
Cape May	439	2%	298	2%	47	2%	9	2%	20	3%	65	2%
Cumberland	600	3%	403	3%	76	3%	22	5%	13	2%	86	3%
Essex	2,911	15%	1,900	15%	463	18%	36	8%	60	10%	452	16%
Gloucester	388	2%	258	2%	49	2%	15	3%	13	2%	53	2%
Hudson	1,372	7%	914	7%	204	8%	21	4%	39	7%	194	7%
Hunterdon	78	0%	52	0%	5	0%	6	1%	7	1%	8	0%
Mercer	1,151	6%	736	6%	192	8%	12	3%	40	7%	171	6%
Middlesex	1,422	7%	960	7%	170	7%	45	10%	54	9%	193	7%
Monmouth	1,015	5%	687	5%	119	5%	25	5%	34	6%	150	5%
Morris	296	2%	197	2%	35	1%	15	3%	12	2%	37	1%
Ocean	746	4%	504	4%	82	3%	33	7%	20	3%	107	4%
Passaic	1,495	8%	955	7%	228	9%	36	8%	38	6%	238	8%
Salem	225	1%	143	1%	39	2%	7	1%	6	1%	30	1%
Somerset	311	2%	213	2%	38	1%	2	0%	15	3%	43	1%
Sussex	151	1%	102	1%	10	0%	9	2%	11	2%	19	1%
Union	1,560	8%	1,023	8%	231	9%	24	5%	32	5%	250	9%
Warren	136	1%	77	1%	16	1%	18	4%	11	2%	14	0%
Not Coded	195	1%	123	1%	0	0%	2	0%	5	1%	65	2%

- Essex County has the highest percentage of commitments among Male Offenders in Other Facilities (15%), and the Youth Complex (18%).
- Camden County has the highest percentage of commitments at Edna Mahan (13%).
- Bergen, Camden, and Middlesex have the highest percentage of commitments at ADTC (10%).
- Essex County has the highest percentage of commitments (16%) at Halfway Houses, County Jails, Reentry, and Saint Francis Hospital.
- Two counties, Essex and Camden, combine to comprise over one fourth (27%) of total NJDOC commitments.

Prison Complex Offenders By County Of Commitment

Institution	Total	Atl	Ber	Burl	Cam	Cape May	Cum	Ess	Glou	Hud	Hunt	Mer	Mid	Mon	Mor	Oc	Pas	Sal	Som	Sus	Un	War	Not Coded
Bayside Main	1,036 100%	66 6%	30 3%	41 4%	154 15%	26 3%	37 4%	151 15%	18 2%	69 7%	3 0%	70 7%	78 8%	56 5%	7 1%	34 3%	82 8%	18 2%	14 1%	11 1%	64 6%	5 0%	2 0%
Bayside Farm	454 100%	32 7%	12 3%	15 3%	77 17%	9 2%	5 1%	58 13%	11 2%	30 7%	3 1%	27 6%	32 7%	34 7%	8 2%	14 3%	32 7%	4 1%	11 2%	1 0%	37 8%	2 0%	0 0%
Bayside Total	1,490 100%	98 7%	42 3%	56 4%	231 16%	35 2%	42 3%	209 14%	29 2%	99 7%	6 0%	97 7%	110 7%	90 6%	15 1%	48 3%	114 8%	22 1%	25 2%	12 1%	101 7%	7 0%	2 0%
CRAF Jones Farm	146 100%	1 1%	11 8%	10 7%	18 12%	9 6%	4 3%	7 5%	10 7%	5 3%	2 1%	2 1%	15 10%	10 7%	6 4%	11 8%	8 5%	2 1%	1 1%	3 2%	9 6%	2 1%	0 0%
CRAF Reception	480 100%	33 7%	11 2%	23 5%	57 12%	10 2%	22 5%	57 12%	8 2%	36 8%	2 0%	42 9%	44 9%	26 5%	5 1%	13 3%	32 7%	7 1%	5 1%	6 1%	36 8%	5 1%	0 0%
CRAF Total	626 100%	34 5%	22 4%	33 5%	75 12%	19 3%	26 4%	64 10%	18 3%	41 7%	4 1%	44 7%	59 9%	36 6%	11 2%	24 4%	40 6%	9 1%	6 1%	9 1%	45 7%	7 1%	0 0%
East Jersey Main	1,174 100%	58 5%	48 4%	32 3%	88 7%	10 1%	24 2%	231 20%	11 1%	104 9%	2 0%	63 5%	96 8%	74 6%	19 2%	36 3%	93 8%	7 1%	20 2%	8 1%	134 11%	5 0%	11 1%
East Jersey Camp	45 100%	3 7%	4 9%	0 0%	1 2%	1 2%	1 2%	7 16%	0 0%	4 9%	0 0%	2 4%	7 16%	3 7%	0 0%	1 2%	4 9%	0 0%	2 4%	0 0%	5 11%	0 0%	0 0%
East Jersey Total	1,219 100%	61 5%	52 4%	32 3%	89 7%	11 1%	25 2%	238 20%	11 1%	108 9%	2 0%	65 5%	103 8%	77 6%	19 2%	37 3%	97 8%	7 1%	22 2%	8 1%	139 11%	5 0%	11 1%

Prison Complex Offenders By County Of Commitment

Institution	Total	Atl	Ber	Burl	Cam	Cape May	Cum	Ess	Glou	Hud	Hunt	Mer	Mid	Mon	Mor	Oc	Pas	Sal	Som	Sus	Un	War	Not Coded
Midstate	676	36	19	28	78	17	13	87	10	57	2	47	68	61	11	35	52	2	11	3	36	2	1
	100%	5%	3%	4%	12%	3%	2%	13%	1%	8%	0%	7%	10%	9%	2%	5%	8%	0%	2%	0%	5%	0%	0%
NJ State Prison	1,494	95	83	60	139	21	46	246	17	100	6	94	93	78	24	55	93	9	18	7	126	7	77
	100%	6%	6%	4%	9%	1%	3%	16%	1%	7%	0%	6%	6%	5%	2%	4%	6%	1%	1%	0%	8%	0%	5%
Northern Main	1,971	66	114	37	133	16	27	476	14	192	3	89	157	84	35	49	199	11	43	13	199	8	1,971
	100%	3%	6%	2%	7%	1%	1%	24%	1%	10%	0%	5%	8%	4%	2%	2%	10%	1%	2%	1%	10%	0%	100%
Northern Ad Seg Male	443	26	17	20	67	14	18	58	15	26	3	23	31	19	8	17	29	6	7	2	34	1	443
	100%	6%	4%	5%	15%	3%	4%	13%	3%	6%	1%	5%	7%	4%	2%	4%	7%	1%	2%	0%	8%	0%	100%
Northern Total	2,414	92	131	57	200	30	45	534	29	218	6	112	188	103	43	66	228	17	50	15	233	9	2,414
	100%	4%	5%	2%	8%	1%	2%	22%	1%	9%	0%	5%	8%	4%	2%	3%	9%	1%	2%	1%	10%	0%	100%
Southern	1,693	106	69	67	230	70	66	187	40	111	11	94	118	72	32	90	130	28	32	16	112	10	2
	100%	6%	4%	4%	14%	4%	4%	11%	2%	7%	1%	6%	7%	4%	2%	5%	8%	2%	2%	1%	7%	1%	0%
South Woods	3,338	255	142	160	533	95	140	335	104	180	15	183	221	170	42	149	201	49	49	32	231	30	22
	100%	8%	4%	5%	16%	3%	4%	10%	3%	5%	0%	5%	7%	5%	1%	4%	6%	1%	1%	1%	7%	1%	1%
Subtotal Male Offenders in Other Facilities	12,950	777	560	493	1,575	298	403	1,900	258	914	52	736	960	687	197	504	955	143	213	102	1,023	77	123
	100%	6%	4%	4%	12%	2%	3%	15%	2%	7%	0%	6%	7%	5%	2%	4%	7%	1%	2%	1%	8%	1%	1%

Prison Complex Offenders By County Of Commitment

Institution	Total	Atl	Ber	Burl	Cam	Cape May	Cum	Ess	Glou	Hud	Hunt	Mer	Mid	Mon	Mor	Oc	Pas	Sal	Som	Sus	Un	War	Not Coded
ADTC	469 100%	16 3%	49 10%	20 4%	47 10%	9 2%	22 5%	36 8%	15 3%	21 4%	6 1%	12 3%	45 10%	25 5%	15 3%	33 7%	36 8%	7 1%	2 0%	9 2%	24 5%	18 4%	2 0%
Subtotal	13,419 100%	793 6%	609 5%	513 4%	1,622 12%	307 2%	425 3%	1,936 14%	273 2%	935 7%	58 0%	748 6%	1,005 7%	712 5%	212 2%	537 4%	991 7%	150 1%	215 2%	111 1%	1,047 8%	95 1%	125 1%
Mahan - Female Prison	599 100%	47 8%	19 3%	26 4%	77 13%	20 3%	13 2%	60 10%	13 2%	39 7%	7 1%	40 7%	54 9%	34 6%	12 2%	20 3%	38 6%	6 1%	15 3%	11 2%	32 5%	11 2%	5 1%
Total Prison Complex	14,018 100%	840 6%	628 4%	539 4%	1,699 12%	327 2%	438 3%	1,996 14%	286 2%	974 7%	65 0%	788 6%	1059 8%	746 5%	224 2%	557 4%	1,029 7%	156 1%	230 2%	122 1%	1,079 8%	106 1%	130 1%

Youth Complex Offenders By County Of Commitment

Institution	Total	Atl	Ber	Burl	Cam	Cape May	Cum	Ess	Glou	Hud	Hunt	Mer	Mid	Mon	Mor	Oc	Pas	Sal	Som	Sus	Un	War	Not Coded
Garden State	1,254 100%	66 5%	32 3%	45 4%	161 13%	26 2%	41 3%	219 17%	26 2%	90 7%	3 0%	118 9%	70 6%	58 5%	17 1%	44 4%	84 7%	23 2%	20 2%	3 0%	100 8%	8 1%	0 0%
Mountainview	649 100%	22 3%	22 3%	12 2%	50 8%	7 1%	13 2%	132 20%	9 1%	62 10%	0 0%	32 5%	55 8%	27 4%	9 1%	15 2%	85 13%	10 2%	8 1%	4 1%	72 11%	3 0%	0 0%
Wagner Main	302 100%	13 4%	9 3%	6 2%	28 9%	5 2%	8 3%	53 18%	7 2%	27 9%	1 0%	21 7%	21 7%	18 6%	3 1%	7 2%	32 11%	1 0%	5 2%	2 1%	31 10%	4 1%	0 0%
Wagner Ad Seg	255 100%	9 4%	5 2%	6 2%	40 16%	6 2%	13 5%	45 18%	4 2%	19 7%	0 0%	17 7%	13 5%	14 5%	4 2%	10 4%	20 8%	3 1%	4 2%	0 0%	22 9%	1 0%	0 0%
Wagner Minimum Units	98 100%	9 9%	5 5%	1 1%	13 13%	3 3%	1 1%	14 14%	3 3%	6 6%	1 1%	4 4%	11 11%	2 2%	2 2%	6 6%	7 7%	2 2%	1 1%	1 1%	6 6%	0 0%	0 0%
Wagner Total	655 100%	31 5%	19 3%	13 2%	81 12%	14 2%	22 3%	112 17%	14 2%	52 8%	2 0%	42 6%	45 7%	34 5%	9 1%	23 4%	59 9%	6 1%	10 2%	3 0%	59 9%	5 1%	0 0%
Total Youth Complex	2,558 100%	119 5%	48 2%	32 1%	88 3%	10 0%	24 1%	231 9%	11 0%	104 4%	2 0%	63 2%	96 4%	74 3%	19 1%	36 1%	93 4%	7 0%	20 1%	8 0%	134 5%	5 0%	11 0%

Offenders In Halfway Houses, County Jails, Reentry, and St. Francis By County Of Commitment

Institution	Total	Atl	Ber	Burl	Cam	Cape May	Cum	Ess	Glou	Hud	Hunt	Mer	Mid	Mon	Mor	Oc	Pas	Sal	Som	Sus	Un	War	Not Coded	
Central Medical Unit	6 100%	0 0%	0 0%	0 0%	2 33%	0 0%	2 33%	1 17%	0 0%	0 0%	0 0%	0 0%	0 0%	0 0%	0 0%	0 0%	0 0%	0 0%	0 0%	1 17%	0 0%	0 0%	0 0%	
County Jail	86 100%	1 1%	2 2%	1 1%	0 0%	1 1%	2 2%	2 2%	3 3%	0 0%	0 0%	2 2%	1 1%	2 2%	1 1%	0 0%	2 2%	0 0%	0 0%	0 0%	0 0%	0 0%	1 1%	65 76%
Reentry	126 100%	3 2%	0 0%	1 1%	1 1%	0 0%	2 2%	74 59%	1 1%	17 13%	0 0%	3 2%	5 4%	2 2%	0 0%	0 0%	9 7%	0 0%	0 0%	0 0%	7 6%	1 1%	0 0%	
Halfway House	2,659 100%	176 7%	83 3%	71 3%	361 14%	64 2%	80 3%	375 14%	49 2%	177 7%	8 0%	166 6%	187 7%	146 5%	36 1%	107 4%	227 9%	30 1%	43 2%	18 1%	243 9%	12 0%	0 0%	
Total Halfway Houses, County Jails, Reentry, St. Francis	2,877 100%	180 6%	85 3%	73 3%	364 13%	65 2%	86 3%	452 16%	53 2%	194 7%	8 0%	171 6%	193 7%	150 5%	37 1%	107 4%	238 8%	30 1%	43 1%	19 1%	250 9%	14 0%	65 2%	